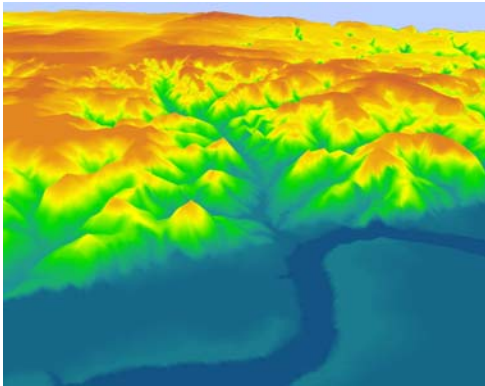


## OUR MISSION AT AGI...

The mission of AGI is to formulate innovative GIS solutions to complex environmental and water-resource concerns, which are at the forefront of environmental policy, land-use issues, governmental decision-making, and future planning of development. AGI professionals are driven to be integral and significant participants in the future of water resources and provide high-quality GIS consulting services in an ethical manner.

---



*Contact us to find out how we can add value to your company's projects and deliverables through supplemental outsourcing.*

*We can apply GIS solutions to any water-resource, environmental or land-use project.*



---

*Advanced GeoSpatial Inc. (AGI)*

---

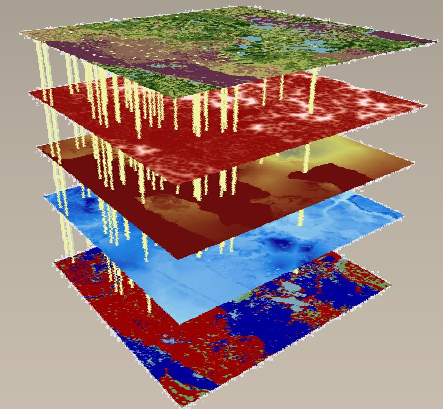
[www.adgeo.net](http://www.adgeo.net)

**(850) 580-4GIS**  
**2441 Monticello Dr., Suite 600**  
**Tallahassee, FL 32303**

[info@adgeo.net](mailto:info@adgeo.net)



## Your Organization's GIS



---

**Advanced GeoSpatial Inc.**

---

**(850) 580-4GIS**

*Demands for GIS services can fluctuate considerably for your organization. At times the need for GIS work can be too great for existing staff, but hiring additional GIS staff may not make sense for the long term. AGI makes outsourcing your organization's GIS needs easy because of the streamlined nature of our business structure and your on-demand use of our services. Tailoring a program to meet your organization's needs is our specialty.*



AGI provides professional GIS support on a supplemental or on an as-needed basis to meet the variable demands of GIS requirements. This makes expanding your organization's GIS capabilities simple and financially sensible for either the short or long term, depending on your needs.

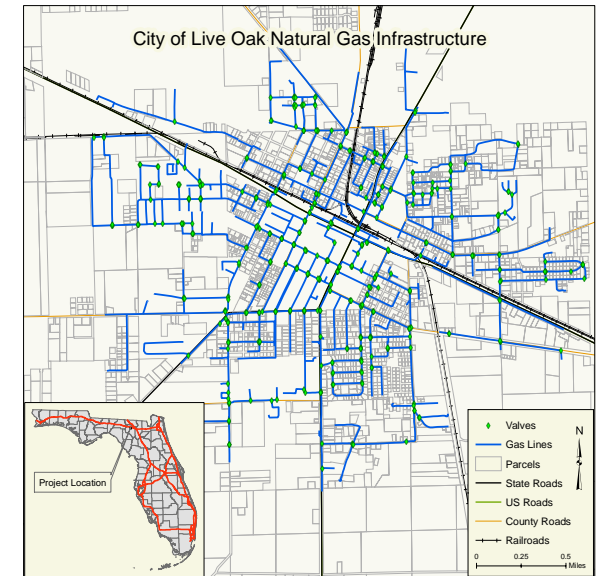
### **AGI's Advantage....**

AGI's edge in today's competitive market is the diverse background of its professionals. Traditionally, governmental agencies and consulting firms employ GIS analysts and geologists or engineers that do not have an intimate, working knowledge of each others' profession. AGI professionals bridge this gap as each of them share experience in hydrogeology, water-resource issues and sophisticated GIS applications. With AGI's help, clients can shorten deliverable time, decrease their costs, and increase the quality and value of GIS analysis in many infrastructural, environmental and water-resource projects. To maximize these benefits, clients use AGI's services on an as-needed basis.



### **What we do....**

AGI specializes in advanced application of spatial analysis to develop solutions to a variety of water-resource, infrastructure, and hydrogeologic applications. AGI is adept in GIS applications from simple site map creation to sophisticated geo-statistical and spatial modeling. Some examples follow on the facing leaf.



### **SPECIALTY GIS SERVICES**

AGI professionals are also skilled in the design, development and analysis of highly complex GIS datasets and maps, including:

- ◆ Geodatabase Design and Maintenance
- ◆ Municipal Infrastructure and Parcel Mapping
- ◆ Detailed Surface Modeling And Characterization
- ◆ Digital Topographic Analysis
- ◆ Consumptive Use Permit Attainment, Renewal And Compliance
- ◆ Well Field Suitability Analysis
- ◆ Water Resource Analysis
- ◆ Environmental Feature Analysis Maps