

# GeoSpatial Advisor™

November 9, 2007

Volume 3, Number 3

## In This Issue

- Seven Hills Regional Users Group of GIS (SHRUG) 6<sup>th</sup> Annual Workshop
- Tips and Tricks: Free Global GeoSpatial Data Added to Your ESRI Projects
- Miscellaneous: GIS and Christmas

## Calendar of Events: November-December

November 12 – Veterans Day Observed

November 13-14 – Seven Hills Users Group of GIS (SHRUG) Meeting; Tallahassee, Florida

November 22 – Thanksgiving Day

November 27 – 3<sup>rd</sup> Technical Advisory Committee Meeting, FAVA Phase II, Tallahassee

December 25 – Christmas Day

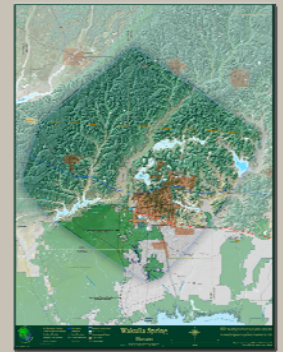
December 31 – New Year's Eve

## Seven Hills Regional Users Group of GIS (SHRUG) 6<sup>th</sup> Annual Workshop

Advanced GeoSpatial is excited to be involved in the upcoming SHRUG workshop to be held in Tallahassee next week (13-14) at the Leon County Civic Center. This meeting will draw GIS users and other interested professionals from diverse industries including water resources, information technology, real estate, land-use planning, utilities and many others. This meeting provides something for everyone from GIS newcomers to advanced GIS experts. Networking opportunities abound, and vendors are on hand all day to answer questions and demo products and services. There are also social events planned and prize drawings.

There are over 50 talks scheduled and posters will also be presented. The meeting registration includes two breakfasts and two lunches. Attendees also get a T-shirt and a tote bag filled with useful novelty items included in the registration. There are contests and prizes as well.

Alan Baker of AGI will present a map of the Wakulla Spring Basin (pictured at right, click to enlarge). This map came about as an effort to support the Wakulla Spring Basin Working Group led by Jim Stevenson. Jim needed a good image to boost the Group's visualization of important natural and anthropogenic features in the Spring Basin area. AGI responded with production of a map that we think is both highly useful and visually appealing.



Alex Wood of AGI will be presenting a talk titled "Leon County Aquifer Vulnerability Assessment and Related Projects: Ground-Water Protection and Management Tools." Alex will provide an overview of the development of the LAVA project, talk about how it's being used, and then review a few other similar projects in Florida.

Jim Cichon serves on the SHRUG committee and is involved with the organization of the social activities, including setup of the geography-oriented Jeopardy! game to be played on the second day of the meeting. Jim also entered a poster showcasing three major aquifer vulnerability assessment projects – Leon, Marion, and Wakulla counties.

If you haven't already planned to attend, but are interested, it's not too late to register. There are lots of benefits with registration including great food and drink. You can sign up online or at the door. Follow this link to learn more: <http://www.shrug-gis.info/workshop07/Default.htm>.

Your input and feedback is very important to us: if you would like to write an article or letter to be included in the GeoSpatial Advisor, email your piece to Alex Wood at [awood@adgeo.net](mailto:awood@adgeo.net) for consideration.

(AGI reserves the right to excerpt, condense and/or grammatically edit your document to fit our newsletter format.)

## Category of Links

**Useful geocoding website:**  
<http://geocoder.us/>

**A GIS-oriented dictionary:**  
<http://www.geo.ed.ac.uk/agi/dict/welcome.html>

**Arizona Geology and GIS data:**  
<http://www.land.state.az.us/alris/index.html>

## Contact Us

Website:

<http://www.adgeo.net>

email:

[awood@adgeo.net](mailto:awood@adgeo.net)

2441 Monticello Drive

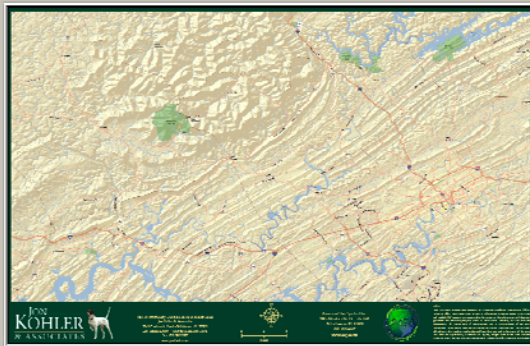
Suite 600

Tallahassee, FL 32303

850/580-4GIS



## Tips and Tricks: Free Global GeoSpatial Data Added to Your ESRI Projects



If you are running ESRI software, you can now access online map data via the web for use in your projects at no charge.

A client recently requested a site map of a specific study area, and needed access to aerial, topographic, and street data of nearby areas as well. He did not have the specifics of exactly how much adjacent area was

required. We knew he wanted to use ESRI's ArcReader, so we simply plugged in some components from the ArcGIS online data with a basic layout, his logo and contact information, and published the map for him. He had his project site, complete with aerial, shaded relief, and street data from which he could print custom maps from not only his site, but any where nearby, and for that matter, any where in the world. [Click here](#) to access ESRI's site and get setup with the online dataset for your projects.

## Miscellaneous: GIS and Christmas:

This issue of the *GeoSpatial Advisor* will be the last of the year 2007. We take this opportunity to express our deep gratitude to you in helping making this another successful year for us at AGI, and to wish you all a very happy holiday season. We greatly appreciate your business, your feedback, your participation in our advisory committee meetings, and your support. We know we could not be where we are without you. Just for fun, here are some interesting and unique ways you can use GIS this Christmas.

Some folks really get into decorating for the season. You can view their displays and even add your own to this Google map mash-up here at Bonner's Christmas Wonderland website via the following link: (<http://christmas.bronners.com/>).

The USGS Board on Geographic Names maintains our nation's Geographic Names Information System (GNIS), which is a complete listing of all the towns, cities, and places in the United States. [GeoCommunity](#) featured an article about place names in the United States that have a Christmas theme, such as Santa Claus, Indiana, and Christmas Tree Point, Alaska. The place names are extracted from the USGS GNIS database, but don't access the site through the story link above, try it here instead (<http://geonames.usgs.gov/domestic/index.html>). One can have a working geographic database of U.S. place names in a GIS project in minutes with this link.

Last year, the North American Aerospace Defense Command (NORAD) provided a way for web users to track Santa on his trip around the world on December 24. Though the site was set up last year, it's still up and active and we anticipate that we'll be able to track Santa again this year! <http://www.noradsanta.org/en/map/index.php>

The *GeoSpatial Advisor*<sup>™</sup> is an electronic newsletter published by Advanced GeoSpatial Inc. The *GeoSpatial Advisor*<sup>™</sup>, all of its contents and materials are Copyright © Advanced GeoSpatial Inc. 2007. All Rights Reserved.