

GeoSpatial Advisor™

March 12, 2008

Volume 4, Number 1

In This Issue

- Use of Vulnerability Assessments
- New Headquarters Office Location and New Branch Office: AGI West
- Miscellaneous: Four Years Strong

Calendar of Events: March-April

March 14 – Florida Chapter of American Water Resources Association meeting, White Springs, Florida, Alex Wood to deliver presentation titled “Summary of FAVA Projects in Florida”

March 31 – AGI Headquarters Office to relocate to 1949 Raymond Diehl Rd., Suite D, Tallahassee, FL 32308

April 4 – Wakulla Spring Working Group Meeting, Tallahassee, Florida

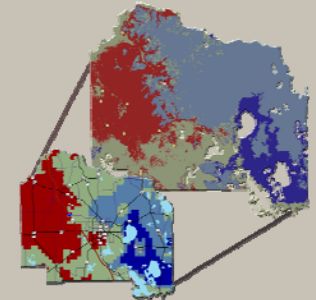
April 7 – AGI US-West office to open in Phoenix, Arizona

April 8 – Ichetucknee Spring Working Group Meeting, Lake City, Florida

Use of Vulnerability Assessments

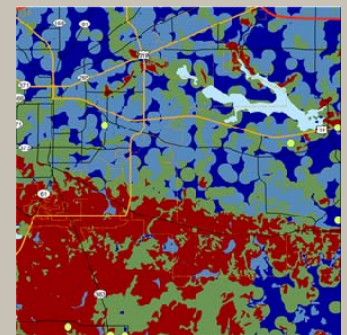
Three aquifer vulnerability assessment projects completed in Florida by AGI have recently been getting a lot of use. **Alachua, Leon, and Marion** counties have been implementing results from their aquifer vulnerability assessment projects by adapting these models into derivative mapping products that have a number of different uses.

Alachua County has been working to replace an outdated protection zone map with a newer, more modern, and more defensible map. Relying on the results of their aquifer vulnerability assessment (2005), combined with local expert knowledge, statistical spatial analysis and recent hydrogeologic data, they are developing a three-zone aquifer protection zone map.



The protection zone map, which is still under development, will allow county and regional land-use planners and environmental professionals to write land-use regulations and wastewater guidelines to better protect the Floridan Aquifer System, the primary source of drinking water in the area. Alachua County is taking a full-scale approach that includes protection of springs, springsheds, and important natural features like sinks and swallets. Along with aquifer vulnerability results, the project will also consider recharge potential & stream to sink features.

In the implementation of the Leon Aquifer Vulnerability Assessment (LAVA), **Leon County**, which lies mainly with the springshed of Wakulla Spring, is seeking to adapt LAVA project results into a springs protection zone map. The intent of this effort is to allow improved decisions to be made about aquifer vulnerability within the Wakulla Spring springshed and other springsheds. This will serve as a powerful tool for planners and local Department of Health professionals in helping guide planning for land use and wastewater in highly vulnerable areas of the Floridan Aquifer System.



Protection zone boundaries will be based on LAVA results and will rely on statistical analytical procedures to generalize LAVA results for adaptation into protection zone maps. Other supplemental data layers may be used as overlays to help in defining protection zones, including swallet features and their catchment basins, or other significant karstic features.

Your input and feedback is very important to us: if you would like to write an article or letter to be included in the GeoSpatial Advisor, email your piece to Alex Wood at awood@adgeo.net for consideration.

(AGI reserves the right to excerpt, condense and/or grammatically edit your document to fit our newsletter format.)

Category of Links

Revised and updated Florida GIS links here:
<http://www.findgis.com/>

From the findgis site above:
http://findgis.com/index.php?option=com_content&task=view&id=2496&Itemid=1

Worldmapper: Tons of data displayed in 'density-equalizing' maps:
http://www.worldmapper.org/extraindex/text_causedeath.html

Contact Us

Website:

<http://www.adgeo.net>

email:

awood@adgeo.net

Headquarters (after 3/31/08):

1949 Raymond Diehl Rd.

Suite D

Tallahassee, FL 32308

850.580.4GIS

AGI-West (after 4/7/08):

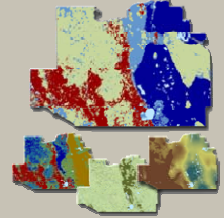
23053 N 21st St.

Phoenix, AZ 85024

480.699.7800

Marion County, Florida has put the results of the Marion County Aquifer Vulnerability Assessment (MCAVA) to multiple uses. The MCAVA map is used by the Clean Water Program of the county's Transportation Department to develop watershed management priorities and in the implementation of its Clean Water Grant Program proposed for next year. The Planning Department of the county is using the model results to help prioritize aquifer vulnerability in a "Greenway Study Area" located in the south-central part of the county.

The MCAVA model results are enabling Marion County to make improved planning decisions based on aquifer vulnerability, for focused protection of springs and groundwater resources. The Board of County Commissioners has approved acceptance of the project map and report as a tool. As part of its Future Land Use Element, Marion County is changing from use of the DRASTIC model, an older index aquifer vulnerability model, to heavier reliance on the MCAVA results.



New Headquarters Office Location and New Branch Office: AGI West

There are a lot of changes taking place at AGI this month and next. AGI headquarters office will relocate at the end of March to a new Tallahassee location. The mailing address will be [1949 Raymond Diehl Rd., Suite D, Tallahassee, Florida 32308](#). Check the website soon for directions and an interactive map. This new location will enable us to better serve our client needs with more accommodating office space. This location is also more convenient to more of our clients. Stop by anytime to see the new digs. All our email addresses, website, and phone number will stay the same.

AGI is also set to open a western United States branch office in Phoenix, Arizona during the first full week of April, to be located at [23053 N 21st St., Phoenix, Arizona 85024](#). We have supported projects in the west from Tallahassee for quite a while, but recent developments have indicated the need to be located onsite and better support our work there. Alex Wood will be relocating to Phoenix to open the office and will primarily be providing GIS Administrative services. We will use our combined location-based expertise, and extensive natural-resource and land-use experience to support clients and projects in Phoenix and the surrounding areas.

AGI will remain headquartered in Tallahassee, Florida and will continue to provide the same high-quality, client-focused support we are known for, and will continue to be a major participant in water resource, land use, and spatial analysis projects for our current and future clients.

Miscellaneous: Four Years Strong

AGI turned four years old in February, and we celebrate by extending a sincere '**THANK YOU**' to all of you who have enabled our company's success. To those of you who have been with us since day one, to our recent partners and clients, we could not have come this far without your support, loyalty, and friendship for which we are very grateful.

It has truly been a great ride so far, and we look forward to a long-lasting relationship with all of you well into the future.

The *GeoSpatial Advisor*[™] is an electronic newsletter published by Advanced GeoSpatial Inc. The *GeoSpatial Advisor*[™], all of its contents and materials are Copyright © Advanced GeoSpatial Inc. 2008. All Rights Reserved.